



IDEABOX

Avian Enrichment

Catalogue

*Dr. Isabella Clegg and Rhiannon
Schultz*



Animal Welfare
Expertise



Tube Box

Roundeurope
Animal Training

Tube Box

Box with different sizes of tubes where food or items can be placed.

Materials

1. Cardboard or PVC tubes or varying diameters.
2. Crate, box, or open bin in which to place tubes
3. Something to tie tubes together if needed.


Types of enrichment:

 **Food-related**

 Cognitive

Time taken to make: **Budget:**

 15 mins

 € 0-30

Safety:

1. Animals should be observed while interacting with item to ensure that accidental ingestion of cardboard or tube material is not ingested. Note that if meat food items are used with cardboard tubes, device should be considered single-use.



Photo credit: Landgoed Hoenderdaell

Tube Box

Instructions:

1. Cut tubes to various lengths. Cardboard or PVC tubes can be used. The more tubes used the more engagement likely from the animal.
2. Place tubes vertically into a carton, box, or crate. Make sure they fit in as snug as possible. Tying the tubes together can secure them further if needed.
3. Place some food or other small enrichment items into some of the tubes.
4. Place box with tubes into the animals enclosure and monitor engagement.





Busy Board

Roundeurope
Animal Training

Busy Board

Fidget activity board for birds that can be adjusted to fit a variety of species.

Types of enrichment:



Cognitive



Physical habitat

Time taken to make:



120-180 mins

Budget:



€ 10-30

Safety:

1. Ensure all items used in construction are nontoxic to birds and cannot be removed by birds.
2. Set fidget board flat on the ground or secure to aviary to avoid it falling over.

Materials

1. Variety of items that can be fastened to a board or surface. Recommended items include: chain, wood pieces and beads, plastic toys, grasses, food items, mirrors, and bells. You can use materials that are otherwise discarded by the technical department, but ensure they are nontoxic to birds.
2. Large board or flat surface to which items can be fastened. Use screws, ties, and bolts to fasten items.



Instructions:

1. Determine which size board to create and source a variety of items that are size-appropriate and nontoxic to birds.
2. Adhere selected items to the back board (particle board works well) using fasteners that work best for each item. Suggested ways to attached items include using hooks, screws, and bolts. Using carabiners allows for items to be rearranged periodically. Food items may also be attached to the board.
3. Secure board to the side of the aviary or other enclosure furniture to avoid it falling over while birds engage. The board can also be laid flat on the ground.
4. Monitor interaction with the device. Note that it may take birds time to acclimate and explore the device.





Flaps Puzzle

Roundeurope
Animal Training

Flaps Puzzle

Puzzle to encourage foraging behaviour by lifting up flaps to get to the food stored inside.

Types of enrichment:



Food-related



Physical habitat



Cognitive



Social

Time taken to make:

Budget:



60 mins



€ 10-20

Safety:

1. Animals should be observed while interacting with item to ensure that accidental ingestion of tube material does not take place. Puzzle should be securely fastened to enclosure to avoid being removed by birds.

Materials

1. PVC tube w/ fitted lids/caps and bird-safe glue
2. Small hinges with fitting screws.
3. Saw for cutting PVC tube to make flaps.



Photo credit: Landgoed Hoenderdaell

Flaps Puzzle

Instructions:

1. Cut tube to desired length. A longer tube allows for a larger puzzle and more birds to feed from it simultaneously.
2. Glue caps/lids to each end of the PVC tube using a bird-safe glue. Allow to dry completely before next step.
3. Use saw to cut out sections (see photo). Reattached these pieces with small hinges to make flaps on the side of the tube.
4. Use hooks or carabiners to secure Puzzle to the side of the enclosure or to enclosure furniture.
5. Place some food or other small enrichment items into some of the tubes.





Disc Puzzle

Roundeurope
Animal Training

Disc Puzzle

Tube with insertable discs that must be removed to access the food reward inside the tube.

Types of enrichment:



Cognitive



Food-related

Time taken to make:



15-30 mins

Budget:



€ 0-10

Safety:

1. Animals should be observed while interacting with item to ensure that accidental ingestion of cardboard or twine does not take place. Puzzle should be securely fastened to enclosure to avoid being removed by birds.

Materials

1. Cardboard tube
2. Discs cut from thin, flat cardboard pieces.
3. Rope or twine to create pull handle on discs.
4. Rope or twine to attached tube to enclosure or habitat furniture.



Instructions:

1. Cut cardboard tube to desired length. A longer tube allows for more discs to be inserted and more engagement.
2. Cut the desired number of slots in the tube where cardboard discs can be inserted.
3. Cut round disks of cardboard that have the same diameter as the tube. Attach a small loop of rope or twine to one end of the discs for the bird to grab and pull.
4. Insert the discs into the slots and make sure they can be pulled out. You can place food items into the tube after each disc, or only at the top of the tube so each disc must be removed before a food reward is accessed.
5. Secure Disc Tube into the enclosure using rope or twine. Observe interaction with the device to ensure safety.

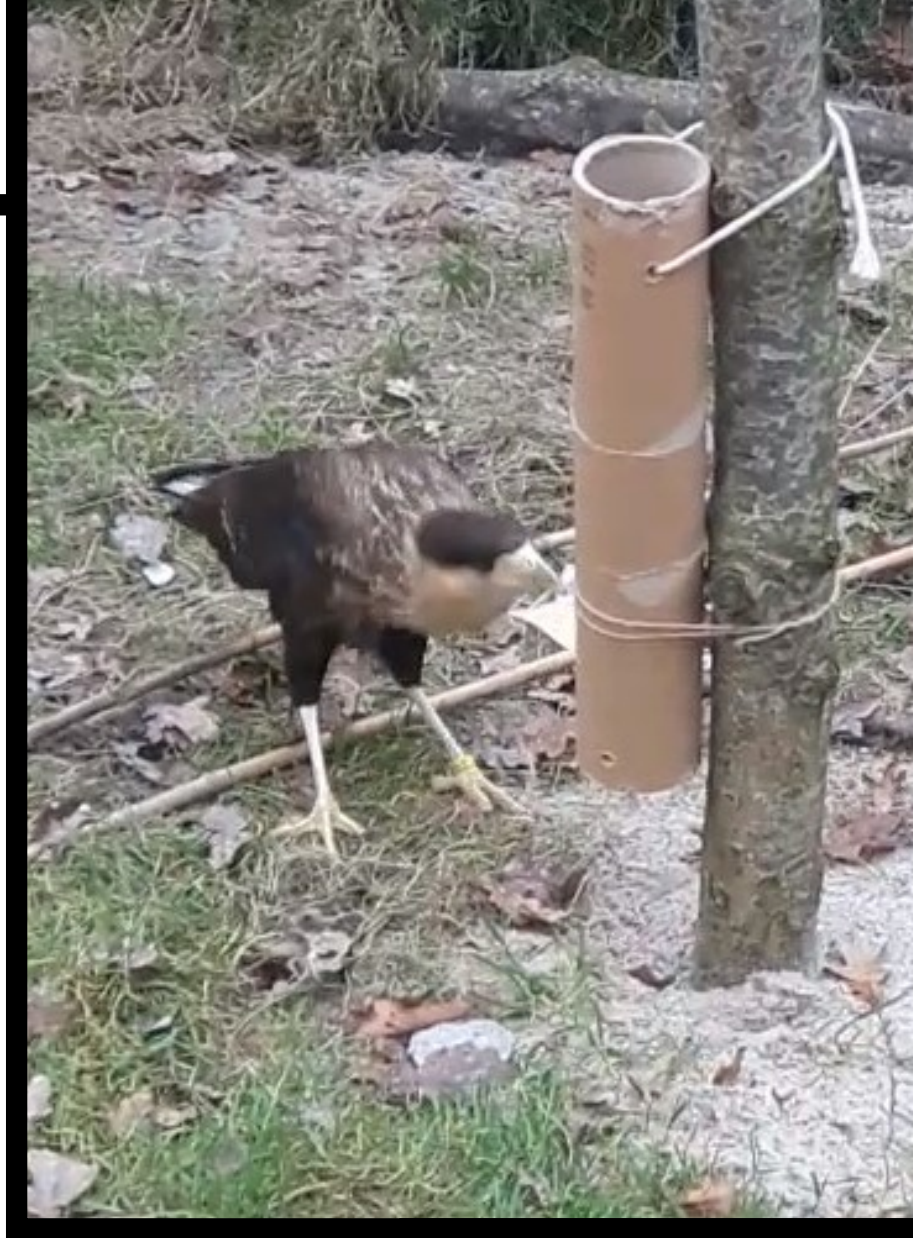




Photo credit: Landgoed Hoenderdaell



Food Tube

Roundeurope
Animal Training

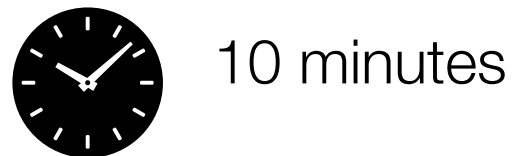
Food Tube

Easy to construct, tube puzzle for encouraging foraging behaviour and problem solving.

Types of enrichment:



Time taken to make:



Budget:



Instructions

1. Cut cardboard tube to desired length.
2. Cut holes of desired shape(s) and size(s) along the tube (see image). Cut a small hole adjacent to the cut openings so that food items can be fastened by pulling and tying sisal rope through the hole.
3. Place variable food items into tube near the cut openings and attach to the other end of the tube using the sisal rope (makes accessing food more challenging).

Materials

1. Large cardboard tubes
2. Sisal rope
3. Box cutter

